

UNITS

UP TO 15,000 PSI (1000 BAR)



DIESEL UNITS

Jetstream diesel units, designed for maximum reliability and simplicity, are available in a wide selection of standard models with nearly limitless options for customization to suit specific needs.



Standard Features

- High performance diesel engines from 110 to 500 horsepower (82 to 373 kW):
 - John Deere
 - Volvo
 - Cummins
 - Deutz
 - Caterpillar
- Jetstream UNx® pump
 - Superior performance, greater flexibility in the field, and reduced downtime and maintenance
 - Field convertible to handle any job
 - See UNx Features and Benefits on page B-1
- PTO and covered belt drive
- State-of-the-art controls
 - Easy-to-use control panel with high-visibility gauges
 - Hand-adjustable bypass valve (see page C-13)
- Dual rupture disc holders (see page G-1)
- Heavy-duty galvanized frame
- Atmospheric water tank
- Water filtration system with stainless steel filter(s)
- Comprehensive safety warning decal package
- Sealed weatherproof electrical wiring

Standard Models

- Four-wheel tandem trailer (above)
- Gooseneck trailer
- Standard skid
- Offshore skid (tested and certified to DNV standards)
- C-Series compact units (see the following page for more information)

Versatility

- Fast, in-the-field pressure range conversion with simple bolt-on Jetstream UNx Fluid Ends
- Convertibility of the UNx design allows one unit to do the work that another manufacturer would require multiple units or several hours of downtime to perform

Typical Applications

Jetstream diesel units are the ultimate solution for a variety of applications, including:

- Surface preparation
- Stripe removal
- Coating removal
- Tank cleaning
- Tube cleaning

Options

- Fuel-saving hydraulic throttle control (see page C-17) idles engine when system pressure is relieved
- Charge pump for pressurized feed
- Greaseless spread-bearing PTO
- Manual transmission drive
- Packing lube water recirculation package
- Safety package with fire extinguisher and grounding strap
- Severe service relief valve (see page G-2) to replace one rupture disc holder
- Shut-in regulator valve (see page C-14)
- Safety watch shutdown system
- Air-compressor package
- Direct water feed (no water tank)
- Hose reel
- Toolbox to store additional fluid ends, supplies, and tools
- Workbench and vise
- Racks for hoses, guns and lances
- Low water shutdown system
- Lifting bail
- Pump oil level and temperature shutdowns

Trailer Options

- Hydraulic or electric brakes
- LED lighting
- ICC trailer lighting
- Ball or ring coupler
- Aluminum wheels
- High-visibility striping around frame

UNITS

UP TO 15,000 PSI (1000 BAR)



UNITS

DIESEL UNITS

Performance Specifications

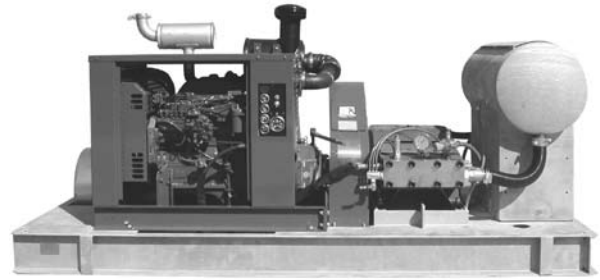
Actual output may vary by engine model and configuration

5015Q	500 hp 373 kW	Plunger Size		16	15	12
		Working Pressure	psi	8,000	10,000	15,000
			bar	550	700	1000
		Maximum Flow	gpm	98.0	79.1	50.6
			lpm	371	299	192

4215	325 hp 242 kW	Plunger Size		16	15	13	12	
		Working Pressure	psi	8,000	10,000	12,500	15,000	
			bar	550	700	850	1000	
		Maximum Flow	gpm	62.9	50.4	40.2	32.5	
	lpm		238	188	152	123		
	250 hp 186 kW	Plunger Size		16	15	13	12	11
		Working Pressure	psi	6,000	8,000	10,000	12,500	15,000
			bar	415	550	700	850	1000
		Maximum Flow	gpm	62.9	48.4	38.8	31.0	25.8
			lpm	238	184	145	119	101
		215 hp 160 kW	Plunger Size		15	13	12	11
	Working Pressure		psi	6,500	8,000	10,000	12,000	15,000
bar			450	550	700	825	1000	
Maximum Flow	gpm		50.7	40.2	32.5	27.3	21.7	
	lpm	192	152	123	103	82		

3615	170 hp 127 kW	Plunger Size		15	13	12	11	10
		Working Pressure	psi	6,000	7,500	10,000	12,000	15,000
			bar	415	525	700	825	1000
		Maximum Flow	gpm	43.6	34.6	26.4	22.0	17.6
	lpm		165	131	98	83	69	
	150 hp 112 kW	Plunger Size		15	13	11	10	9
Working Pressure		psi	5,000	7,000	10,000	12,000	15,000	
		bar	350	475	700	825	1000	
Maximum Flow		gpm	43.6	32.6	23.3	19.4	15.7	
	lpm	165	123	88	73	59		

3015	125 hp 93 kW	Plunger Size		11	10	9	8
		Working Pressure	psi	8,000	10,000	12,500	15,000
			bar	550	700	850	1000
		Maximum Flow	gpm	23.2	18.4	14.9	11.8
			lpm	89	70	56	45



Standard Skid

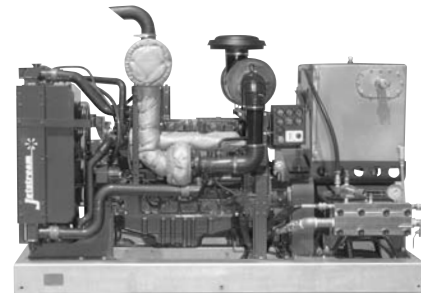


Offshore Certified Skid



Gooseneck Trailer

C-Series Compact Units



- Four models available ranging from 125 to 340 horsepower (92 to 254 kW)
- Deutz and Volvo open power units
- Small footprint maximizes use of space
- Greaseless direct drive PTO
- Synchronous belt drive
- Fuel-saving hydraulic throttle control (see pages C-17 & C-18) idles engine when system pressure is relieved
- Packing lube water recirculation
- Stainless steel charge pump for pressurized feed
- Available to European customers with optional trailer mount and soundproofing enclosures
- Available outside of Europe as a stationary skid



* Displacement (flow) values represented assume 90% mechanical efficiency and neglect inefficiency resulting from compressibility of water and expansion of pressure-bearing components.

UNITS

UP TO 15,000 PSI (1000 BAR)



ELECTRIC UNITS

Jetstream electric units, designed for maximum reliability and simplicity, are available in a wide selection of standard models.

Standard Features

- Top-of-the-line electric motors from 60 to 250 horsepower (45 to 186 kW) with 1.15 service factor
- Three available enclosure types:
 - Open drip
 - TEFC (totally enclosed fan cooled)
 - Explosion proof
- Jetstream UNx[®] pump:
 - Superior performance, greater flexibility in the field, and reduced downtime and maintenance
 - See UNx Features and Benefits on page B-1
- Soft-start or across-the-line starter
- Covered belt drive
- State-of-the-art controls
 - Hand-adjustable bypass valve
 - Start, stop, jog button control
 - Shutdown system to protect equipment
- Dual rupture disc holders (see page G-1)
- Water filtration system with stainless steel filter(s)
- Atmospheric water tank
- Low water shutdown system
- Heavy-duty galvanized frame
- Comprehensive safety warning decal package

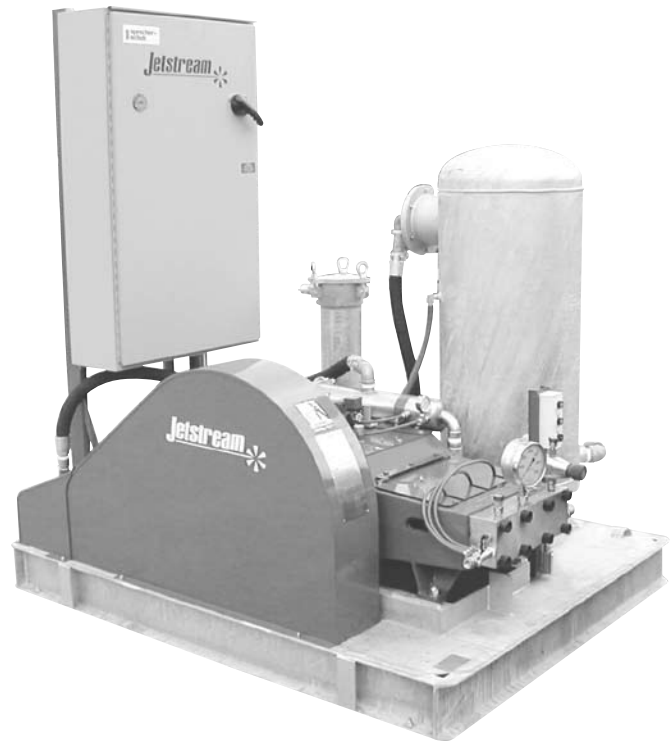
Standard Models

- Standard skid
- Steerable trailer

Typical Applications

Jetstream electric units are the ultimate solution for a variety of applications, including:

- Surface preparation
- Paint booth cleaning
- Tube cleaning
- Tank cleaning
- Waterjet cutting



Options

- Charge pump for pressurized feed
- Packing lube water recirculation package
- Variable speed drive
- Severe service relief valve (see page G-2) to replace one rupture disc holder
- Motor hour meter
- Shut-in regulator valve (see page C-14)
- Pressurized water tank
- Direct water feed (no water tank)
- Hose reel
- Lifting bail

Steerable Trailer Options

- Toolbox to store additional fluid ends, supplies and tools
- High-visibility striping around frame

UNITS

UP TO 15,000 PSI (1000 BAR)

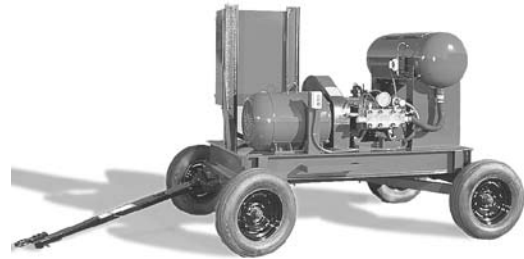


UNITS

ELECTRIC UNITS

Performance Specifications

4215	250 hp 186 kW	Plunger Size		16	15	13	12
		Working Pressure	psi	8,000	10,000	12,500	15,000
			bar	550	700	850	1000
	Maximum Flow	gpm	52.1	42.0	33.3	26.9	
		lpm	197	159	126	102	
	200 hp 149 kW	Plunger Size		16	15	13	12
Working Pressure		psi	6,000	8,000	10,000	12,500	15,000
		bar	425	550	700	850	1000
Maximum Flow		gpm	53.6	43.2	34.2	27.6	23.2
		lpm	203	164	129	104	88



Steerable Trailer

3615	150 hp 112 kW	Plunger Size		15	13	12	11	10
		Working Pressure	psi	6,000	8,000	10,000	12,000	15,000
			bar	425	550	700	825	1000
	Maximum Flow	gpm	38.7	30.6	24.8	20.8	16.5	
		lpm	147	116	94	79	63	
	125 hp 93 kW	Plunger Size		15	13	12	11	10
Working Pressure		psi	6,000	7,500	10,000	12,000	15,000	
		bar	425	525	700	825	1000	
Maximum Flow		gpm	34.1	27.0	21.8	18.3	14.5	
		lpm	129	102	83	69	55	

3015	125 hp 93 kW	Plunger Size				11	10	9
		Working Pressure	psi			10,000	12,000	15,000
			bar			700	825	1000
	Maximum Flow	gpm			21.3	16.8	13.6	
		lpm			81	64	51	
	100 hp 75 kW	Plunger Size			11	10	9	8
		Working Pressure	psi		8,000	10,000	12,500	15,000
			bar		550	700	850	1000
		Maximum Flow	gpm		21.3	16.8	13.6	10.8
			lpm		81	64	51	41
		75 hp 56 kW	Plunger Size			11	10	9
	Working Pressure		psi		8,000	10,000	12,500	15,000
bar				550	700	850	1000	
Maximum Flow	gpm			16.7	13.3	10.7	8.5	
	lpm			63	50	40	32	
60 hp 45 kW	Plunger Size		11	10	9	8	7	
	Working Pressure	psi	6,000	7,500	10,000	12,500	15,000	
		bar	425	525	700	850	1000	
	Maximum Flow	gpm	16.8	13.3	10.7	8.5	7.1	
		lpm	64	50	40	32	27	

* Displacement (flow) values represented account for 1.15 service factor and assume 90% mechanical efficiency and neglect inefficiency resulting from compressibility of water and expansion of pressure-bearing components.

UNITS

UP TO 15,000 PSI (1000 BAR)



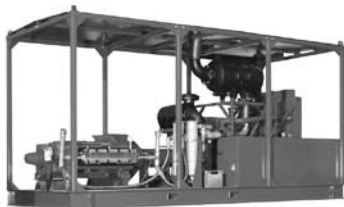
UNITS

CUSTOM UNITS

In addition to a wide selection of standard units and options, close collaboration between Jetstream solutions providers and engineers provides almost unlimited options for customization to meet specific needs. Common requests include:

- Custom trailers and skids
- Special control devices (pneumatic, electronic, hydraulic)
- Customizations to meet special plant requirements

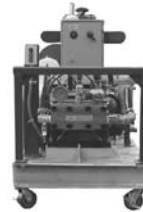
Jetstream can build the perfect unit for any job.



500 hp Offshore Certified Skid



Special Water Tank



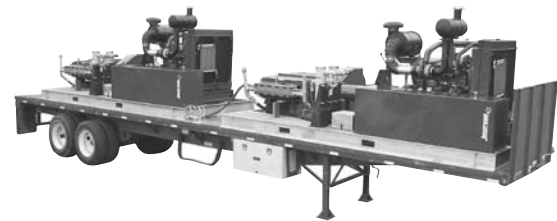
Push Cart



Truck-Mounted Dual Pump Unit



Enclosed Trailer Unit



Tandem 5015Q Trailer — 1,000 horsepower (750 kW)

“RIGHT START” PROGRAM

In order to ensure customer satisfaction, Jetstream has developed the Right Start program, a four-step plan designed to provide the owners and operators of new Jetstream waterblast units with the knowledge and support needed to feel familiar, confident and satisfied with Jetstream equipment and personnel.

1. Transportation



Once a new waterblaster is built and thoroughly tested, the *Traffic Manager* contacts the new owner to arrange for the unit's arrival to the right place at the right time.

2. Training



All new waterblasters include personal training by the *Right Start Technician*. Training involves both classroom and “hands-on” instruction to make sure that each operator is thoroughly familiar with the design and function of the unit and accessories, enabling him to safely put the new equipment to optimal use.

3. Follow-up



Within thirty days of delivery, and again within sixty days, the *Solutions Provider* will call to answer any questions and ensure complete satisfaction.

4. Trust



If any questions or problems ever arise, the Jetstream team is available and committed to providing prompt answers and solutions.

