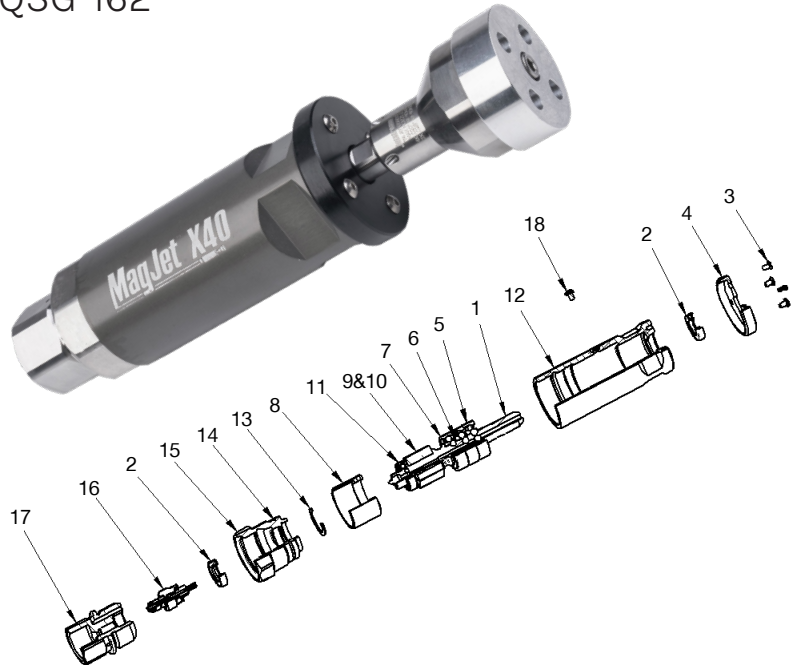




# MAGJET™ X40

## QUICK START GUIDE

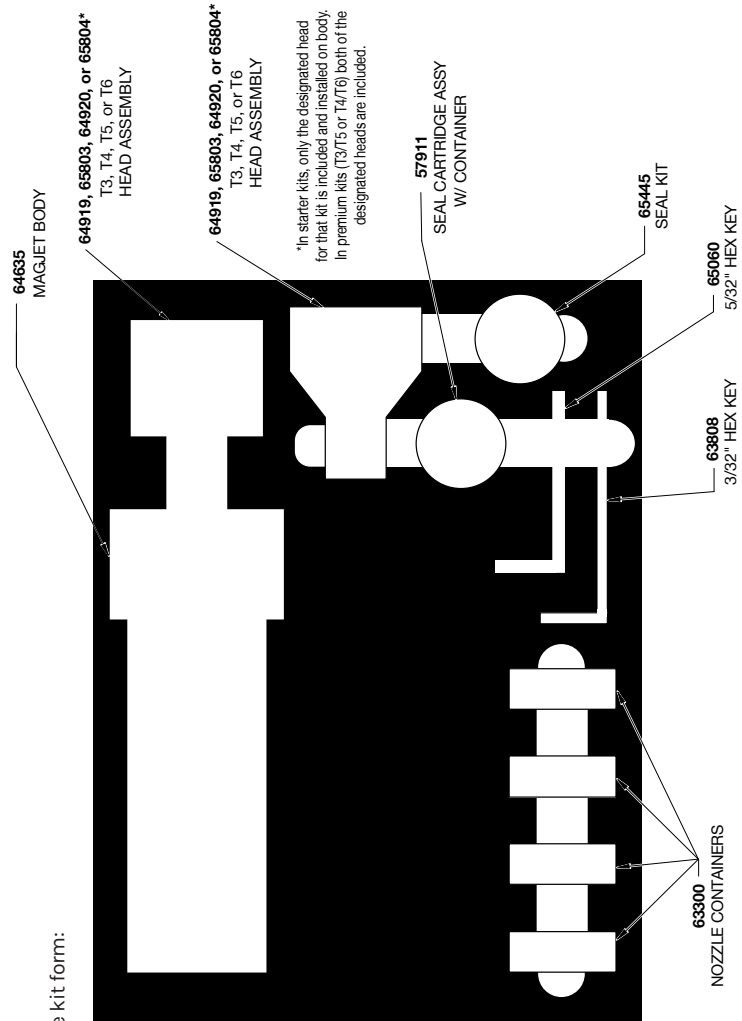
QSG-162



Assembly PN 64635						
Item	Qty	Part Number	Description	Item	Qty	Description
1	1	57938	Shaft	10	4	65005S South Magnet
2	2	57926	Oil Seal	11	1	57928 Pilot Bearing
3	4	64637	Capscrew, #8-32	12	1	64636 Main Housing
4	1	64638	Front Cover	13	1	57931 Wave Spring
5	2	57933	Angular Contact Bearings	14	1	57935 O-ring, 1-1/2 ID
6	1	64992	Shim, Spring Steel	15	1	57918 Pilot Bearing Retainer
7	1	64991	Deep Groove Ball Bearing	16	1	57911 Seal Cartridge
8	1	57937	Current Sleeve	17	1	57916 Seal Cartridge Housing
9	4	65005N	North Magnet	18	1	66982 Capscrew, #8-32, Security

**NOTE:** Part numbers and descriptions are subject to change without notice.

## MAGJET™ X40 | PARTS PLACEMENT



The MagJet X40 is available in hard case kit form:

65306	MAGJET T3 STARTER KIT
66236	MAGJET T4 STARTER KIT
65308	MAGJET T5 STARTER KIT
66237	MAGJET T6 STARTER KIT
65307	MAGJET T3/T5 PREMIUM KIT
66238	MAGJET T4/T6 PREMIUM KIT

### HEAD ASSEMBLIES

Designation	PN	Torque Angle
T1	66881	10°
T2	66261	12.5°
T3	64919	15°
T4	65803	17.5°
T5	64920	20°
T6	65804	22.5°
T7	66259	25°

Jetstream of Houston LLP • 5905 Thomas Road Houston, TX 77041  
[www.waterblast.com](http://www.waterblast.com) • 832-590-1300

## MAGJET™ X40 | NOZZLE FLOW RATES

**NOTE:** Preferred thrust is 1/3 the body weight of the operator. This chart assumes 200 lb. operator (67 lb-F thrust limit). See MagJet X40 PI (PI-162) for full flow charts and associated thrust.

Orifice Size (in.)	T2 Head (PN 66261)										T3 Head (PN 64919)													
	4 UHPx Nozzles					2 UHPx Nozzles, 2 Plugs					4 UHPx Nozzles					2 UHPx Nozzles, 2 Plugs								
	30000	2068	40000	2757	43511	3000	30000	2068	40000	2757	43511	3000	30000	2068	40000	2757	43511	3000	30000	2068	40000	2757	43511	3000
	psi	bar	gpm	lpm	gpm	lpm	psi	bar	gpm	lpm	gpm	lpm	psi	bar	gpm	lpm	gpm	lpm	psi	bar	gpm	lpm	gpm	lpm
.016"																								
.017"																								
.018"																								
.019"																								
.020"																								
.021"																								
.022"																								
.023"																								
.024"																								
.025"																								
.026"																								
.027"																								
.028"																								
.029"																								
.030"																								
.031"																								
.032"																								
.033"																								
.034"																								
.035"																								
.036"																								
.037"																								
.038"																								
.039"																								

Orifice Size (in.)	T4 Head (PN 65803)										T5 Head (PN 64920)													
	4 UHPx Nozzles					2 UHPx Nozzles, 2 Plugs					4 UHPx Nozzles					2 UHPx Nozzles, 2 Plugs								
	30000	2068	40000	2757	43511	3000	30000	2068	40000	2757	43511	3000	30000	2068	40000	2757	43511	3000	30000	2068	40000	2757	43511	3000
	psi	bar	gpm	lpm	gpm	lpm	psi	bar	gpm	lpm	gpm	lpm	psi	bar	gpm	lpm	gpm	lpm	psi	bar	gpm	lpm	gpm	lpm
.013"																								
.014"																								
.015"																								
.016"																								
.017"																								
.018"																								
.019"																								
.020"																								
.021"																								
.022"																								
.023"																								
.024"																								
.025"																								
.026"																								
.027"																								
.028"																								
.029"																								
.030"																								
.031"																								
.032"																								

Orifice Size (in.)	T6 Head (PN 65804)										T7 Head (PN 66259)													
	4 UHPx Nozzles					2 UHPx Nozzles, 2 Plugs					4 UHPx Nozzles					2 UHPx Nozzles, 2 Plugs								
	30000	2068	40000	2757	43511	3000	30000	2068	40000	2757	43511	3000	30000	2068	40000	2757	43511	3000	30000	2068	40000	2757	43511	3000
	psi	bar	gpm	lpm	gpm	lpm	psi	bar	gpm	lpm	gpm	lpm	psi	bar	gpm	lpm	gpm	lpm	psi	bar	gpm	lpm	gpm	lpm
.012"																								
.013"																								
.014"																								
.015"																								
.016"																								
.017"																								
.018"																								
.019"																								
.020"																								
.021"																								
.022"																								
.023"																								
.024"																								
.025"																								
.026"																								
.027"																								
.028"																								

## DANGER

**THIS PRODUCT CAN BE DANGEROUS IF NOT USED PROPERLY!** Always wear appropriate Personal Protective Equipment (PPE). Detailed PPE information can be found at: [www.fsesgsafety.com](http://www.fsesgsafety.com) and clicking on the JETSTREAM name or by referring to the yellow JETSTREAM SAFETY WARNING pamphlet (PI-082).

The following Quick-Start Guide is intended to provide the customer with an expedient reference for MagJet X40 installation and operation. It does not replace the complete product instructions (PI-162).

This product is sold with the understanding that the purchaser agrees to thoroughly train all operators and maintenance personnel in the correct and safe installation, operation, and maintenance of the product and to provide adequate supervision of personnel at all times. JETSTREAM urges customers to make complete instructions available to all personnel and ensure they are read thoroughly before installing, connecting or using the MagJet X40. Retain these instructions for future reference. If this product is resold or otherwise conveyed, the purchaser must pass on these instructions to the new user. If any questions remain, or to request additional copies, call JETSTREAM at (800) 231-8192 or (832) 590-1300.

Read the yellow JETSTREAM SAFETY WARNING pamphlet (PI-082) included with the shipment of the product.

## CONNECTING MAGJET X40

Only use with a control gun barrel length of 48 inches MINIMUM to prevent nozzle discharge from accidentally striking the operator's feet, legs, or body. Refer to WJTA "Industry Best Practices for the use of High Pressure Waterjetting Equipment" Section 11.10.6 and Section 2.7.

Engage the pump and depress the control gun trigger to clear any debris from the system prior to installing the MagJet X40 onto the control gun barrel.

## NOZZLE INSTALLATION

Before installing the nozzles into the MagJet X40, verify each nozzle is the correct size, and inspect each nozzle to ensure the sapphire orifice is not damaged or missing. Make sure the nozzle orifices are not too small in order to prevent excessive system pressure when the gun's control valve trigger/pedal is depressed. Refer to the Flow Rate Charts for the proper flow rate and thrust for your application.

**NOTE:** The MagJet X40 may be configured with either four nozzles or two nozzles and two plugs. For a given flow, the larger streams obtained by using the two-nozzle configuration may be preferred for some cleaning applications.

1. Use a 5/32" hex key to remove the bolt holding the head cover in place to allow access to the nozzle ports in the head.
2. Apply anti-seize compound to the male threads of the nozzle or plug (and cone if using UHPX nozzles) and install using an adjustable or 5/16" wrench. Hand tighten to 50 lbs. in.
3. Apply medium strength Loctite to the threads of the bolt and reinstall the head cover. Screw in an torque the bolt to 100 lbs. in.

## WARNING

A system must be used when 2 or more dump gun operators are connected to a single waterblast unit. Each gun operator must have independent control of nozzle pressure at their location.



MagJet surface may exceed 200°F.



MagJet utilizes magnets which produce strong magnetic fields. Keep the tool at least 6 inches away from any medical device.

## OPERATION

As per the WJTA-IMCA Recommended Practices, all operators shall follow the OSHA regulations for personal protective equipment. (OSHA guidelines for Personal Protective Equipment are available in document number 3151-12R 2004, which can be obtained from [www.osha.gov](http://www.osha.gov).) All operators shall be issued suitable head protection, eye protection, hearing protection, body protection, hand and foot protection and respiratory protection (if needed). For detailed specifications on all protections required, refer to the WJTA-IMCA 'Recommended Practices for the Use of High Pressure Waterjetting Equipment' Section 6, Protective Equipment For Personnel.

## DANGER

The MagJet X40 nozzle's discharge jet(s) can inflict serious bodily wounds. Use only thoroughly trained operators to perform cleaning operations with the MagJet X40.

1. Carefully inspect the gun for damage or missing parts. Ensure that all components work smoothly and freely.

## QSG-162

2. During all control gun operations, a secondary or "safety watch" operator should observe the gun operator at all times from a safe, but proximate, distance. The safety watch should have both voice and sight communication with the gun operator at all times. The safety watch must have the ability to instantly shut the waterblast system down (from his location) with the use of a shutdown device (such as JETSTREAM's Emergency Shut-Down Package, PN 53120) if the control gun operator encounters problems or if a problem is suspected. Call JETSTREAM for system specific recommendations.
3. Use only clear, clean, cold water that has been filtered to 10 microns with these rotating nozzles.

## ATTENTION

The person controlling the cleaning nozzle must be the gun operator and must have control of the pressure. Do not allow a secondary or remote operator to have control of the pressure.


4. Do not connect multiple dump type control guns to a single high-pressure water source without the use of a Multi-Gun Valve (MGV) to make each gun operator independent of the other operators. Call JETSTREAM for assistance if two or more dump type control guns must be used in the waterblast system.
5. Place barricades with warning signs or barricade tape around work area. This includes the waterblast unit and all high-pressure hoses.
6. The gun operator must be outfitted with Personal Protective Equipment (PPE). OSHA guidelines for Personal Protective Equipment are available in document number 3151-12R 2004, which can be obtained from [www.osha.gov](http://www.osha.gov).
7. Assume blasting position with gun and ensure blast nozzle cannot cross any part of the legs, feet, or body.

## CAUTION

DO NOT use the gun or MagJet X40 if it has not been cleaned and inspected prior to starting the working shift.

Protect the control gun in freezing conditions. Stop using the gun if any low temperature operational problems occur. Drain the gun and remove its cartridge if not in use during freezing conditions.

## FOR FURTHER INFORMATION SEE:

 YouTube <https://www.youtube.com/user/JetstreamWaterblast>

and the

**Jetstream Safety Manual**

