



VERSABOOM™

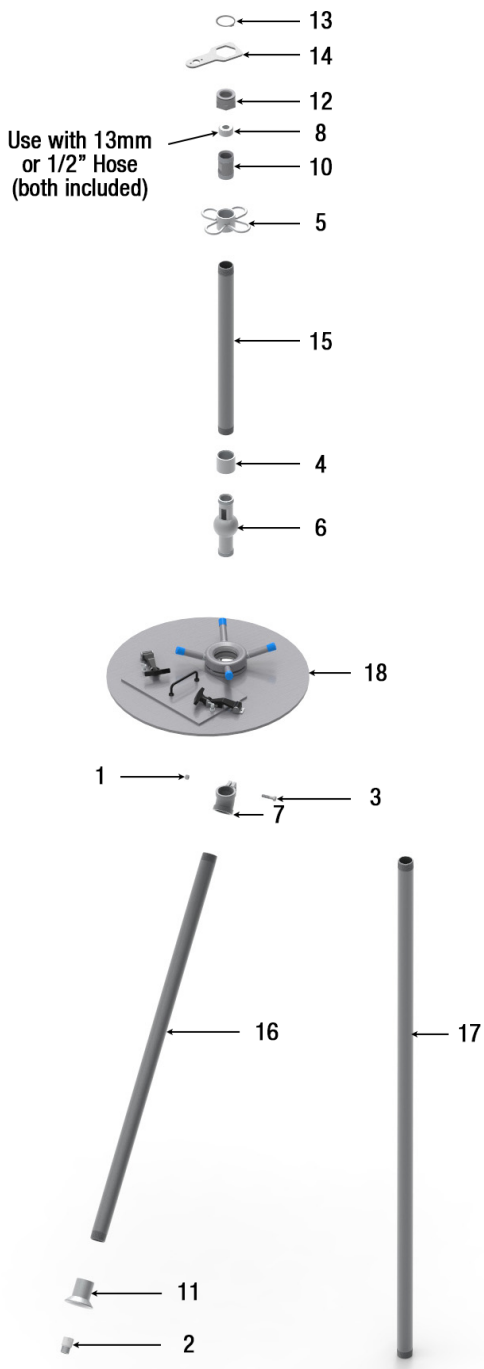
QUICK START GUIDE

QSG-201

The VersaBoom™ is a positioning device designed to hold a 3D waterblast tool in a desired location inside tanks and vessels with limited access. The VersaBoom can be easily adjusted to a variety of angles and insertion depths which allow the operator to maneuver the tool into the necessary position for optimal cleaning.



VERSABOOM™ | EXPLODED VIEW (ASSY PN 67901)

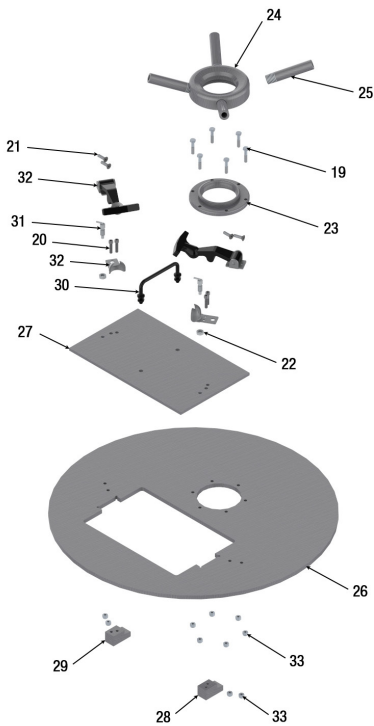


VERSABOOM™ | PARTS LIST (ASSY PN 67901)

Item	Qty	Part Number	Description
1	1	25296	Lock Nut
2	1	26065	Bushing
3	1	27091	Capscrew
4	2	67908	Coupler
5	1	67919	Coupling, Anchor
6	1	67920	1" Ball Pipe
7	1	67921	Elbow
8	1	67922	Collet, 13mm
9	1	67923	Collet, 1/2" NPT
10	1	67924	Nipple
11	1	67925	Outlet Fitting
12	1	67926	Gland
13	1	67927	Retaining Ring
14	1	67928	Gland Wrench
15	1	67929	Tube Extension, 2'
16	1	67930	Tube Extension, 4'
17	1	67931	Tube Extension, 6'
18	1	67936	Base Plate Assy

NOTE: Part numbers & descriptions subject to change without notice.

PART BREAKDOWN - BASE PLATE ASSY (PN 67936)



Item	Qty	Part Number	Description
19	6	26565	Capscrew
20	4	62778	Socket Head
21	4	64382	Capscrew
22	2	67906	Hex Nut
23	1	67909	Base Ring
24	1	67910	Cap
25	4	67911	Pipe Handle
26	1	67912	Base Plate
27	1	67913	Hatch
28	1	67914	Hatch Ramp, Left
29	1	67915	Hatch Ramp, Right
30	1	67917	Hatch Handle
31	2	67918	Plunger, Hatch Lock
32	2	67993	Hatch Latch Assy
33	10	71391	Nut

NOTE: Part numbers & descriptions subject to change without notice.



THIS PRODUCT CAN BE DANGEROUS IF NOT USED PROPERLY! Always wear appropriate Personal Protective Equipment (PPE). Detailed PPE information can be found at: www.fsesssafety.com and clicking on the JETSTREAM name or by referring to the yellow JETSTREAM SAFETY WARNING pamphlet (PI-082).

This product is sold with the understanding that the purchaser agrees to thoroughly train all operators and maintenance personnel in the correct and safe installation, operation, and maintenance of the product and to provide adequate supervision of personnel at all times. JETSTREAM urges customers to make complete instructions available to all personnel and ensure they are read thoroughly before installing, connecting or using the Versaboom. Retain these instructions for future reference. If this product is resold or otherwise conveyed, the purchaser must pass on these instructions to the new user. If any questions remain, or to request additional copies, call JETSTREAM at (800) 231-8192 or (832) 590-1300.

Read the yellow JETSTREAM SAFETY WARNING pamphlet (PI-082) included with the shipment of the product.

OPERATION

As per the WJTA-IMCA Recommended Practices, all operators shall follow the OSHA regulations for personal protective equipment. (OSHA guidelines for Personal Protective Equipment are available in document number 3151-12R 2004, which can be obtained from www.osha.gov.) All operators shall be issued suitable head protection, eye protection, hearing protection, body protection, hand and foot protection and respiratory protection (if needed). For detailed specifications on all protections required, refer to the WJTA-IMCA 'Recommended Practices for the Use of High Pressure Waterjetting Equipment' Section 6, Protective Equipment For Personnel.

SETUP/OPERATION

The VersaBoom is designed to hold and position a 3D waterblast tool on the end of a ½” or 13mm waterblast hose. With the use of extension tubes, offset distances of up to 10 feet from the manway can be achieved.

The length of the extension tube above the ball pipe (Item 6) should allow for anchoring to a nearby structure and a safe position for the operator when adjusting the device. The length of the extension tube below the positioning ball will be determined by the desired cleaning nozzle position inside the vessel. The baseplate (8) should be securely attached to the manway using bolts or clamps.

1. Pass hose end through the gland (Item 12), nipple (10), anchor coupling (5), 2’ extension tube (16), coupler (4), and ball pipe (6)
2. Hose enters split end of elbow (7) and through lower extension tube (16/17) and outlet fitting (11)
3. Install collet (8 or 9 depending on hose size) between nipple (10) and gland (12).
4. Connect all 1-1/2” NPT pipe connections together securely
5. Align lower extension tube with lower slot in ball pipe and tighten the bolt (3) in the split end of elbow.
6. Attach waterblast tool to hose end.

QSG-201

The operator can adjust the position by loosening the cap (6), pivoting the assembly into the desired position and tightening the cap. Use the anchor loops on the anchor coupling (5) to hold the position of the ball. The hose can be extended or retracted in the vessel by loosening the collet (8/9) with the gland wrench (12). Make sure all clamps and joints are securely tightened and the hatch is secured before operation. An aluminum hatchway is provided to view the tool location within the vessel and to check on the cleaning process.



1. Securely attach baseplate to vessel manway flange with bolts or clamps.
2. Anchor upper extension tube to nearby structure with chain or similar restraint using loops on anchor coupling.
3. To maximize stability, keep upper and lower extension tubes and anchor attachment in the same plane.
4. When collet is loosened, hose will slide freely through the ball. It must be supported by hand.
5. Make sure all clamps and joints are securely tightened and the hatch is secured before operation.
6. Always shut down pump before the cleaning head is repositioned.



DO NOT use the Versaboom™ if it has not been cleaned and inspected prior to starting the working shift.

FOR FURTHER INFORMATION SEE:

 <https://www.youtube.com/user/JetstreamWaterblast>

and the

Jetstream Safety Manual

