



OPERATION MANUAL

QuadraBlast™ Air Gun

Protect Workers and Equipment with the Jetstream® Visual Safety System*

Yellow	Green	Blue	Orange
10,000 PSI	15,000 PSI	20,000 PSI	40,000 PSI
690 Bar	1,034 Bar	1,379 Bar	2,758 Bar

Be sure operators are using the right equipment.
New color coded parts and accessories clearly show water-blast components in use are correctly and safely suited to current pump pressures with the Visual Safety System.



- Easy to use and implement
- Easy to see at a distance
- Helps keep workers safe
- Helps prevent equipment damage



*Complies with WJTA visual safety system color guidelines

This manual is copyrighted with all rights reserved. Under copyright laws, this manual may not be copied in whole or in part or reproduced in any other media without the express written permission of Jetstream of Houston, LLP or its authorized agent. Permitted copies must carry the same proprietary and copyright notices as were affixed to the original. Under the law, copying includes translations, whole or in part, into another language.

Every reasonable effort has been made to ensure that the data given in this document is accurate, however, the information, figures, illustrations, tables, specifications, and schematics contained herein are subject to change without notice. Jetstream® reserves the right to change any term, condition or process represented in this document without notice and at Jetstream's sole discretion.

©2022 Jetstream of Houston, LLP.
Published in USA
P/N 62148
Revision C

Jetstream of Houston, LLP
5905 Thomas Road, Houston, TX 77041
(832) 590-1300 | (800) 231-8192
www.waterblast.com

Jetstream® is a registered trademark of Federal Signal Corp.

WARRANTY

Limited Warranty. Each Waterblast Unit, Bareshaft Pump, and Fluid End manufactured by Jetstream is warranted against defects in material and workmanship for a period of 12 months or 1,000 hours, provided it is used in a normal and reasonable manner and in accordance with all operating instructions. If sold to an end user, the applicable warranty period commences from the date of delivery to the end user. If used for rental purposes, the applicable warranty period commences from the date of delivery to the party holding the equipment available for rent. This limited warranty may be enforced by any subsequent transferee during the warranty period. This limited warranty is the sole and exclusive warranty given by Jetstream.

Exclusive Remedy. Should any warranted product fail during the warranty period, Jetstream will cause to be repaired or replaced, as Jetstream may elect, any part or parts of such Waterblast Unit, Bareshaft Pump, or Fluid End that the examination discloses in Jetstream's sole judgment to be defective in material or factory workmanship. Repairs or replacements are to be made at Jetstream in Houston, Jetstream FS Solutions Rental Center, the customer's location, or at other locations approved by Jetstream. Labor is furnished only when the unit or part is returned to the factory or when travel and expenses are paid by the purchaser. Freight, travel and expenses incurred in connection with repair or warranty are excluded from this warranty and shall be paid by the purchaser. The foregoing remedies shall be the sole and exclusive remedies of any party making a valid warranty claim.

The Jetstream Limited Warranty shall NOT apply to (and Jetstream shall NOT be responsible for):

1. Major components or trade accessories that have a separate warranty from their original manufacturer, such as, but not limited to: diesel engines, electric motors, electronic soft starter and/or across the line starter panels, axles, PTO's, clutch packs, high pressure gauges, high pressure hoses, flex lances, etc.
2. Normal adjustments and maintenance services.
3. Normal wear parts such as, but not limited to: oil, clutches, belts, filters, packing, cartridges, univalves, face seals, diffusers, gland nut bushings, plungers, nozzles, rupture disks, etc.
4. Failures resulting from the machine being operated in a manner or for a purpose not recommended by Jetstream including failures or malfunctions resulting from corrosion, misapplication, overpressurization, inadequate pump suction conditions, improper water quality, improper maintenance, or misuse.
5. Repairs, modifications or alterations which in Jetstream's sole judgment, have adversely affected the machine's stability, operation or reliability as originally designed and manufactured.
6. Items subject to misuse, negligence, accident or improper maintenance.

NOTE The use of any part other than ones approved by Jetstream may invalidate this warranty. Jetstream reserves the right to determine, in its sole discretion, if the use of non-approved parts invalidates the warranty. Nothing contained in this warranty shall make Jetstream liable for loss, injury, or damage of any kind to any person or entity resulting from any defect or failure in the machine or part.

THIS WARRANTY IS, AND SHALL BE IN LIEU OF ALL OTHER WARRANTIES, EXPRESS OR IMPLIED, INCLUDING WITHOUT LIMITATION, ANY IMPLIED WARRANTIES OF MERCHANTABILITY OR FITNESS FOR A PARTICULAR PURPOSE, ALL OF WHICH ARE DISCLAIMED. THIS DISCLAIMER AND EXCLUSION SHALL APPLY EVEN IF ANY WARRANTY POSSIBLY ASSERTED FAILS OF ITS ESSENTIAL PURPOSE.

This warranty is in lieu of all other obligations or liabilities, contractual and otherwise, on the part of Jetstream. For the avoidance of doubt, Jetstream shall not be liable for any indirect, special, incidental or consequential damages, including, but not limited to, loss of use or lost profits. Jetstream makes no representation that the unit has the capacity to perform any functions other than as contained in Jetstream's written literature, catalogs or specifications accompanying delivery of the machine. No person or affiliated company representative is authorized to alter the terms of this warranty, to give any other warranties or to assume any other liability on behalf of Jetstream in connection with the sale, servicing or repair of any machine manufactured by Jetstream. Any legal action based hereon must be commenced within eighteen (18) months of the event or facts giving rise to such action.

Jetstream reserves the right to make design changes or improvements in its products without imposing any obligation upon itself to change or improve previously manufactured products.

TABLE OF CONTENTS

General Safety.....6

Control Gun Safety.....10

Product Description.....12

Before Using The Air Gun.....14

Connecting The Gun15

Operating The Gun17

Proper Waterblast Technique18

Gun Maintenance19

Servicable Parts 20

GENERAL SAFETY

Recognizing Safety Information

! This is the safety-alert symbol. When you see this symbol on your unit or in this manual, be alert to the potential for personal injury.

Follow recommended precautions and safe operating practices.

Understand Signal Words

A signal word – DANGER, WARNING, or CAUTION – is used with the safety-alert symbol. DANGER identifies the most serious hazards.

This symbol and these signal words appear on the unit and in this manual. Read and understand the following definitions of the signal words before operating or working on the unit.

! DANGER DANGER is used to indicate the presence of a hazard which will cause severe personal injury or death, if the warning is ignored.

! WARNING WARNING is used to indicate the presence of a hazard which can cause severe personal injury or death, if the warning is ignored.

! CAUTION CAUTION is used to indicate the presence of a hazard which will or can cause minor personal injury, if the warning is ignored.

NOTICE NOTICE indicates installation, operation, or maintenance information which is important but not hazard-related.

Safety Training

Only trained personnel may setup, operate, or maintain this equipment.

Waterblast operators must be aware of the dangers that exist while using water blasting equipment. The

cleaning nozzle's discharge jet(s) can inflict serious bodily injury. Jetstream® recommends demonstrating to new operators the potential damage of the discharge jet(s). This can be done by showing the effect of a waterjet from a straight tip nozzle cutting a scrap piece of 2 in. x 4 in. (50 mm x 100 mm) wood.

A safety training DVD is available from Jetstream® at their website (www.waterblast.com).

Training materials are also available from the Water Jet Technology Association (WJTA) (www.wjta.org).

General Waterblast Safety Manual



A safety manual is shipped with each unit. The safety manual provides various guidelines and instructions for maintaining a safe work environment while using and maintaining waterblast equipment.

Ensure all operators and maintenance personnel have read and understand the content in this manual in order to ensure a safe work environment.

Contact Jetstream for extra copies of the manual.

FS Solutions Training



FS Solutions training begins where Right Start training stops. Our certified training covers all skill levels and incorporates: safety, application, troubleshooting, and field maintenance training.

For more information contact Jetstream.

New Unit Start Up Training

Jetstream Right Start

At Jetstream, we think you need to know exactly what you're getting. Right Start is free unit start up training for U.S. customers and is designed to get you familiar with your new Jetstream waterblaster!



For more information on Right Start Training, contact Jetstream at 1-800-231-8192

Read Instructions



Read and follow all the manufacturer's instructions prior to using any waterblast product. Contact the manufacturer if unsure of any details.

Further instructions for safe operation are located in the Jetstream Safety Manual. Read this manual before operating the equipment.

Inspect Equipment

Inspect the condition of all components prior to use. Do not use any item that is in suspect condition. If unsure about the condition of a component, ask a supervisor or maintenance personnel for instructions. Use only components that are marked with a recommended operating pressure.



Never exceed the operating pressure of the weakest component in the system.

Jetstream Training

Jetstream Training Classes

Jetstream offers multiple certified training classes to promote safe, efficient, and profitable operation.



For more information on Jetstream Training, contact Jetstream at 1-800-231-8192.

Store Components Properly

Properly store components to protect from damage when not in use. Ensure all warning tags and markers remain intact for the next usage.

Check Connections

Check the condition of the connection threads prior to making any high pressure connection. For 15,000 psi (1000 bar) and lower pressures use at least four wraps of Teflon tape on male pipe (NPT) threads for sealing purposes. Do not allow any tape to overlap the end of the fitting. Tape fragments may enter the system's water stream and clog the nozzle's orifices. Apply a coat of anti-seize compound over the Teflon sealant to prevent "galling" or seizing of threads. For "Jetstream® 20K"; "type M"; "MP (20K)" & HP (40K)" connections use anti-seize compound on the threads and the male cone.

Tighten Connections

Properly tighten all high pressure connections. Hand-tighten pipe (NPT) fittings and then tighten with a

wrench another $1\frac{1}{2}$ - 2 full revolutions. Do not exceed two revolutions on NPT threaded connections. All NPT connections must have a minimum engagement of four threads.

Use caution when using a pipe wrench. Pipe wrenches can cause deep scoring leading to weakened components.

Refer to the Technical sections of the 40K catalog at the following web page for more information and torque specifications for the various fittings used on these units.

<https://www.waterblast.com/Content/Images/uploaded/40K%20Catalog%20-%20Section%20I.pdf>

Be Prepared

If the equipment malfunctions or a malfunction is suspected, immediately stop the cleaning activity and relieve the pressure in the system before attempting any repair. Always follow manufacturer's repair instructions.

Performing Maintenance or Repairs

Because of the hazards involved with water blasting, maintenance or repairs may only be performed by service personnel that are properly trained to maintain this equipment. Training is available through Jetstream® and can be requested from the Jetstream website (www.waterblast.com) or FS Solutions rental centers.

Following repairs or maintenance, operate the system at low pressure to test the system. Adjust the pressure slowly during operation.

Freezing Conditions

After shutting down in freezing conditions, even for brief periods, drain the water from all components. Prior to starting the equipment after a freeze, the operation of all equipment components must be checked carefully to ensure they are not frozen, or cracked, and are still in safe operating condition.

Check Water Supply

Use only clean water. Check water filters daily and replace filter bags and cartridges as needed. If your water source is questionable, check the filters more often. Dirty filters will eventually

allow particles to pass through them and damage equipment. Refer to the unit's operation manual for details on filtration and water quality.

Barricade the Working Area

Place barricades or shields with warning signs or use barricade tape around the complete work area. The barricade must be far enough from the blasting to keep observers safe.



Use Only Products Intended For High Pressure Water Blast

Know the pressure ratings of all equipment and components being used and never exceed their operating pressure. The lowest pressure rated component in the system establishes the system operating pressure. Jetstream® stamps all products with the maximum recommended operating pressure. Find the lowest rated component in the system and do not exceed that pressure.



Never Alter Waterblast Products

Do not alter any product without written consent from the manufacturer. Specifically, never alter or modify hand held control guns.

Inspect Equipment

Inspect the condition of all components prior to use. Do not use any item that is in suspect condition. If unsure about the condition of a component, ask a supervisor or maintenance personnel for instructions. Use only components that are marked with a

recommended operating pressure. Never exceed the operating pressure of the weakest component in the system.

Personal Protective Equipment

All operators must be provided with proper protective equipment (PPE) including: hard hat with plastic face shield, rain suit, non-skid knee boots with metatarsal protection, shin and foot shields, gloves, ear protection, safety glasses and appropriate armor. (Fig. 1)

Most high pressure waterblasting operations produce noise levels in excess of OSHA standards, 90 dB(A). Control gun operators and unit operators must wear ear protection in accordance with OSHA regulation.

Perform regular inspections and maintenance of hearing protection equipment. All personnel exposed to 90 dB(A) or greater noise levels must receive instruction for the proper use of ear protection so that their noise exposure lies within the limits specified by OSHA.

OSHA guidelines for Personal Protective Equipment are available in document number 3151-12R 2003. The full document can be obtained from www.osha.gov.

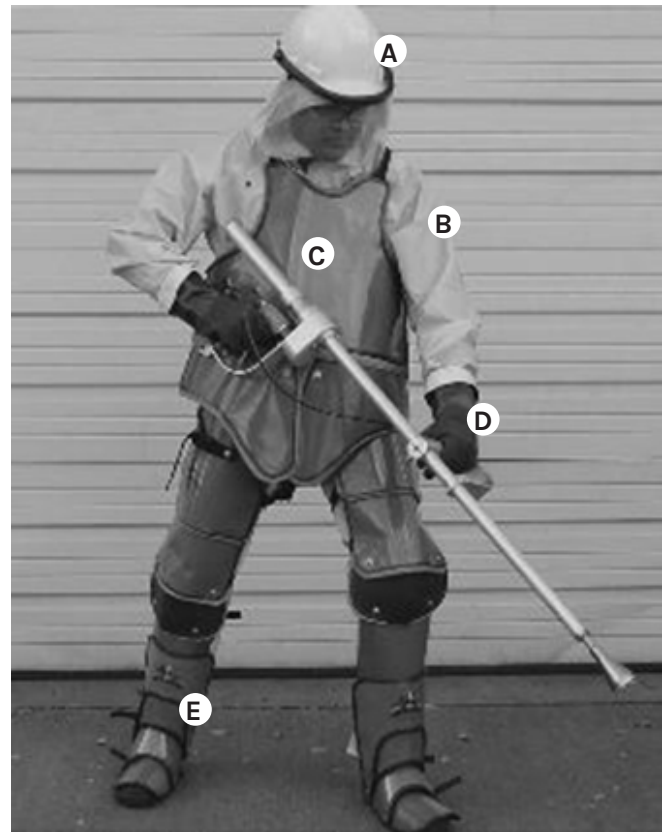
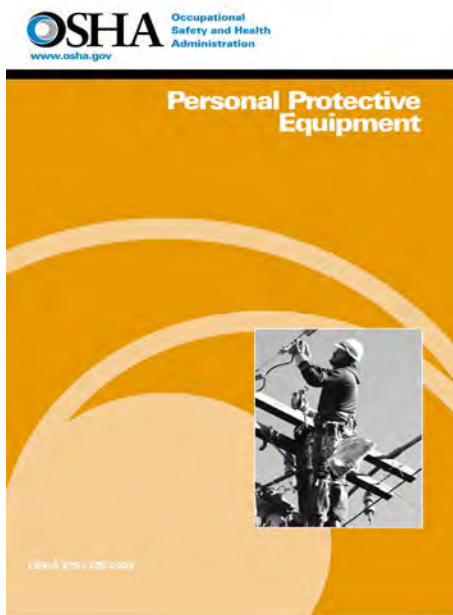


Fig. 1: Proper PPE

Recommended Safety Apparel	
A	Hard Hat with Face Shield, Safety Glasses, Ear Protection
B	Rain Suit
C	Protective Armor
D	Waterblasting Gloves
E	Non-skid Knee Boots with Metatarsal Protection, Shin and Foot Shields

CONTROL GUN SAFETY

Use Safety Devices

Use safety devices such as the following to protect the operator from harm.

- Trigger Lock (Fig. 2) - Prevents accidental discharge from the control gun.
- Adjustable Shoulder Stock (Fig. 2) - Provides support and control during operation.
- Handle (Fig. 2) - Provides control during operation and offers reduced trigger force to prevent fatigue.
- Safety Shroud (Fig. 3) - Provides added protection in the event of a hose failure.
- Whip Check (Fig. 4) - Restrains hose in the event of the end fitting or hose coupling failure.

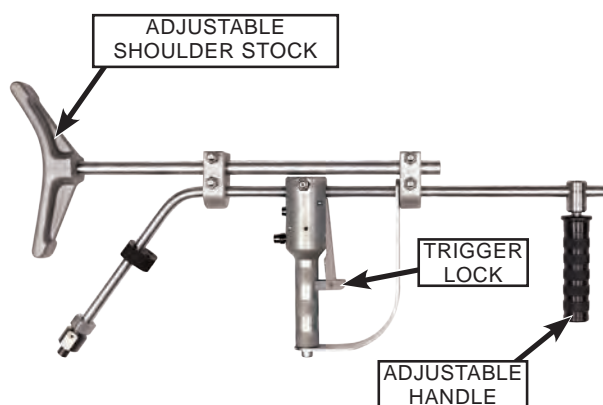


Fig. 2: Control Gun Safety Features

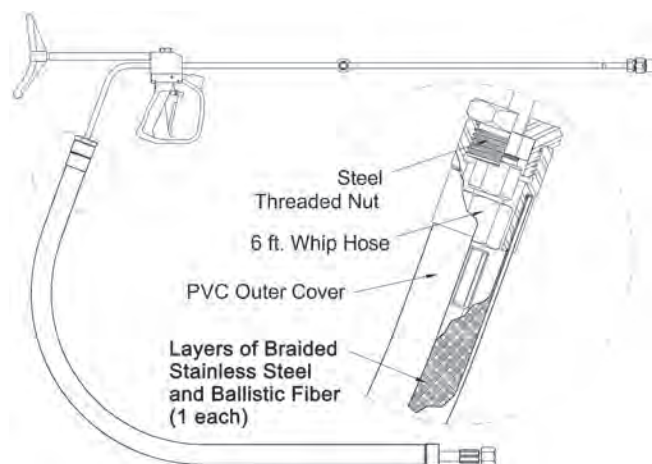


Fig. 3: Safety Shroud Installation



Fig. 4: Whip Check

Keep Gun Barrel at Safe Distance

It is recommended to use a 48 in. (1.2 m) long barrel to promote safe gun operation.

Shorter barrels are available, but only for use in confined spaces. Never make any modifications to the gun barrel or gun!

Check Your Control Device

Check the control gun or control device for smooth and proper operation before each operator's shift. Do not use any control gun or control device that has not been checked.

Check Gun Dumping Pressure

When using dump style control guns, ensure the system pressure drops to near zero immediately

when its trigger/pedal is released. If the control gun does not relieve system pressure immediately or the system pressure does not fall below 200 psi (138 bar) when the trigger/pedal is released, do not use the control gun.

Brace Yourself

The thrust or rearward force from the control gun is substantial and is usually nozzle-limited to around 50 lb. (23 kg) or one-third the operator's weight. A control gun operator using a hand held gun must position himself, with firm footing, and brace his body for gun thrust before depressing the gun trigger. The operator must maintain a firm, solid footing at all times to counter this thrust force (Fig. 5). The thrust can be controlled by proper sizing of the nozzle. However, in some cases the flow and pressure required to do the cleaning produces a thrust greater than 50 lb. (23 kg). In these instances, a mechanized cleaning tool may be required.

Pull the trigger slowly to prevent becoming thrown off balance.



Fig. 5: Counteracting Thrust

Start At Low Pressure

When beginning a blasting job, start with the system at a low pressure, then slowly increase to operating pressure. Depress and release the control gun trigger/pedal several times at operating pressure to check operation of the control gun before commencing cleaning.

Never Use a Malfunctioning Gun

Never use a control gun or control device that has malfunctioned or is suspected of malfunctioning. Suspect and malfunctioning equipment must be inspected and/or repaired by a qualified high pressure maintenance mechanic.

Do Not Lock The Trigger In The Blasting Position

Never tie or wedge the control gun trigger in the blasting position. Doing this can cause accidental discharge and cause great bodily harm or death.

Check Electrical Cords

Use only electric throttle control cords that have been rated for wet conditions. Keep cord connectors and switches out of water.

Check Dump Water Hose

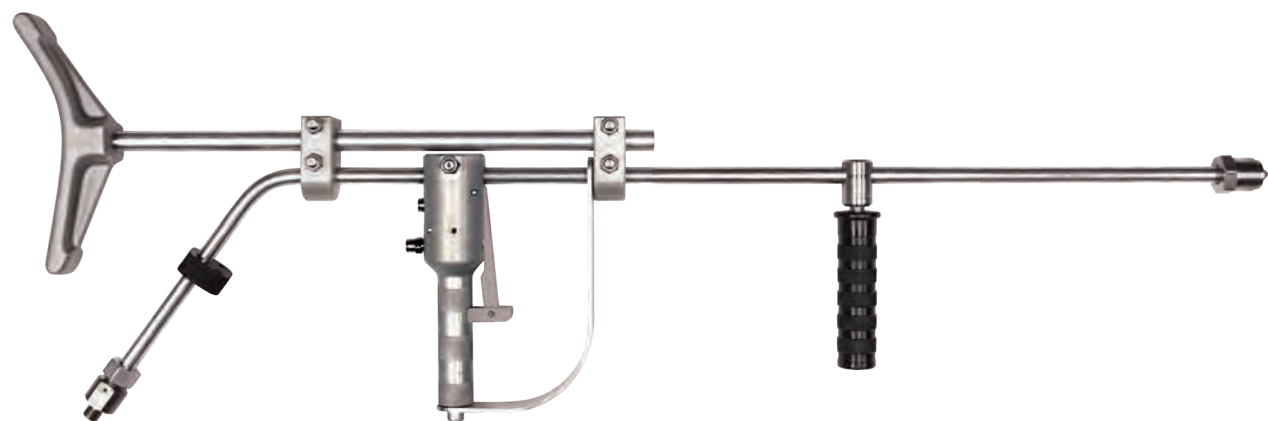
Any hose used for transporting dump water back to the pump or to the ground must be properly sized. Dump water hoses must have a large enough diameter and short enough length so potentially dangerous back pressure is kept low.

Protect dump water hoses from traffic.

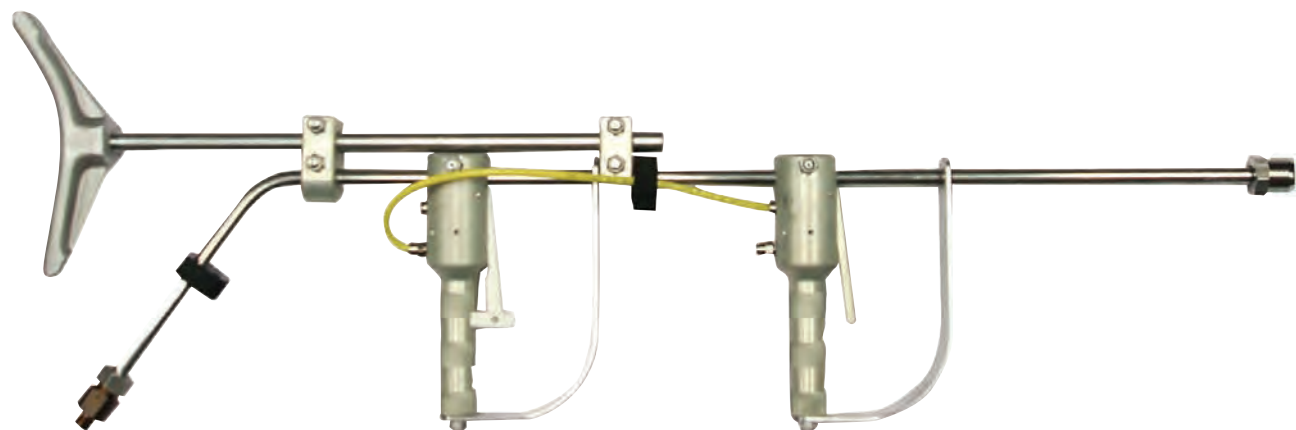
Use Control Gun As Intended

Do not operate hand operated guns by foot. Use the hand trigger only as intended.

PRODUCT DESCRIPTION



Model	Part Number	Maximum Operating Pressure
Single Trigger	65875-XX-1-XX-XX-XXX	40,000 psi (2800 bar)



Model	Part Number	Maximum Operating Pressure
Double Trigger	65875-XX-2-XX-XX-XXX	40,000 psi (2800 bar)

The Jetstream Quadrablast™ Air Gun is an air actuated single or dual trigger waterblast control gun that is designed for maximum safety and superior field durability. The air gun is designed for a maximum operating pressure of 40,000 psi (2800 bar). When used in conjunction with the 40,000 psi (40K) remote control valve, the operator can build pressure by squeezing the gun’s trigger(s). When the trigger is pulled, air from the control valve flows to the gun through a small valve in the handle and is directed back in order to actuate the control valve to build pressure. When one or both

triggers are released, the 40K remote control valve “dumps”, or relieves the high pressure water to atmospheric pressure. When used in accordance with a Stoneage Barracuda or similar self-rotating nozzle, a spinning jet pattern is created.

The Jetstream Quadrablast™ Air Gun contains very few parts and requires essentially zero maintenance with no wear items to speak of. Regular maintenance of the chosen nozzle will be required and is dependent on the model selected.

The Quadrablast™ Air Gun is rated for 40,000 psi (2800 bar) maximum operating pressure and utilizes a 7/8" Type "M" male inlet connection. Adapters are available to connect the high pressure hose to the gun as well as additional safety shrouds for protection. Air tubing is all 1/4" and air fittings are all push-to-connect.

BEFORE USING THE AIR GUN

NOTICE

For newly purchased guns, inspect the gun carefully upon removal from its shipping container for damage. Do not assemble or use the gun if any damage is apparent. Notify Jetstream immediately if damage is apparent or the condition of any component is questionable. New Quadrablast™ air guns are shipped completely assembled and ready to be put into service.

WARNING

For safety reasons, perform the following inspections before the start of each working shift. Do not use the Quadrablast™ air gun without inspecting all related components. Failure to do so could result in serious personal injury.

1. Inspect all components. The air hoses must be secure and free of cracks, splits or holes. The trigger(s) must move smoothly and return positively to the trigger's fully open position when released. If the trigger action is not smooth and positive, determine and correct the cause before putting the gun into service.
2. Inspect the inlet connection fitting and ensure it is properly tightened.
3. Inspect the operation of the trigger safety mechanism on each trigger.
4. Inspect the Quadrablast™ air gun in conjunction with the 40K remote control valve. Before waterblasting and with the nozzles removed from the gun, operate the gun by squeezing and releasing the trigger and verifying proper operation of the gun and control valve. Refer to "CONNECTING THE GUN" on page 15 and "OPERATING THE GUN" on page 17 for more information.
5. Check the 40K remote control valve for air leaks and ensure the dump valve opens and closes correctly. If the control valve or the 40K air gun is not operating correctly, determine and correct the cause before putting the 40K air gun into service.

CONNECTING THE GUN

Precautions

- Use only 40,000 psi (2800 bar) rated fittings and hoses for use with the gun. All components must have a minimum burst rating of 100,000 psi (6900 bar).
- For operator safety, all high pressure hose sections connected to the gun and remote control valve must be in good condition and free of leaks and cover damage.
- Use of a hose whip check is recommended. Replace safety whip checks frequently for increased operator safety.
- Apply anti-seize compound to all threads, cone, and seat areas for protection against galling.

WARNING

A bi-mode control valve must be used when two or more waterblast operators are connected to a single waterblast unit. Each waterblast operator must have independent control of nozzle pressure at their location.

DANGER

Do not shorten gun barrels or use a 40K air gun with a working distance (primary air motor trigger to nozzle tip) of less than 40 in. (100 cm). severe injury or death may result.

Connections

1. With the pump off, flush the low pressure side of the pump by opening the drain valve on the manifold.
2. After flushing the manifold, connect the high pressure hose(s) and whip check to the output fitting on the manifold.
3. Turn on the pump and flush the hose(s) for about 30 seconds. Use two people to flush the hose, one to operate the pump and one to hold the end of the hose as shown in Fig. 6.



Fig. 6: Flushing the Discharge Hose

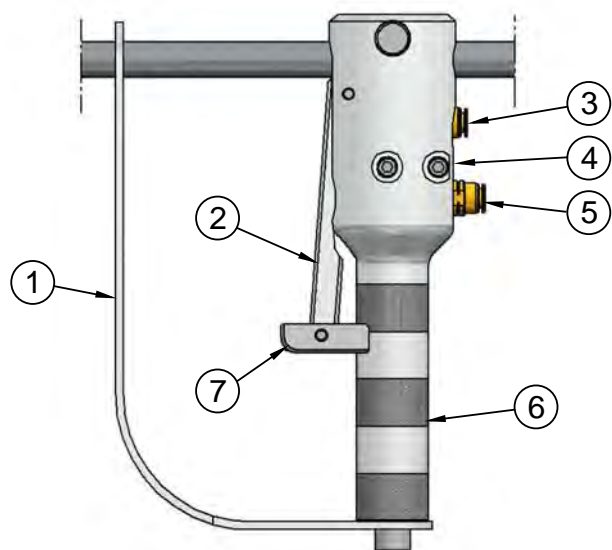
4. Stop the pump and connect the high pressure hose and the air source to the control valve.
5. Connect the high pressure hose from the control valve to the air gun.

For Single Trigger:

6. Attach the inlet air hose to inlet fitting (3, Fig. 7) on the handle.
7. Attach the outlet air hose to outlet fitting (5, Fig. 7) on the handle.

For Dual Trigger:

8. Attach the inlet air hose to inlet fitting (3, Fig. 7) on the rear handle.
9. Attach the outlet air hose to outlet fitting (5, Fig. 7) on the front handle.



- | | |
|----------------------|-----------------------|
| 1. Trigger Guard | 5. Air Outlet Fitting |
| 2. Trigger | 6. Grip Handle |
| 3. Air Inlet Fitting | 7. Trigger Safety |
| 4. Air Valve | |

Fig. 7: Air Control Handle Detail

10. With the nozzle removed from the air gun, turn on the pump and flush the rest of the system for another 30 seconds.

11. Turn the pump off and then install the nozzle onto the air gun. Before installing the blast nozzle, check the nozzle size to make sure its orifice(s) is not too small in order to prevent over-pressurization during operation.

OPERATING THE GUN

1. Before beginning waterblasting, adjust the front trigger/hand grip by loosening the locking nut located at the top of the handle and moving the trigger/hand grip to a desirable location and then re-tightening the locking nut.

using the gun if any low temperature operational problems occur. Drain the gun and remove the high pressure hose if it is not in use in freezing conditions.

WARNING

Use both triggers/hand grips on the gun to maintain safe control and proper operation. Do not use a 40K air spinner gun that has missing, modified, or broken triggers/hand grips. Loss of control of the gun could result in injury and/or death.

2. Check for sufficient barrel clearance. Get into blasting position with the gun. Move the gun around to make sure the blast nozzle will not cross any part of the legs, feet or body. Check gun for smooth and proper operation. Do not use the gun if it has not been cleaned and inspected before the start of the working shift.

3. Check for adequate hose length. Get into blasting position and move around to make sure that all hoses (air and high pressure) from the remote control valve are free from obstructions and are not tangled.

4. Make sure that the oil flow through the system from the oiler is set correctly. To set the oiler, close off the flow control knob by turning it clockwise; then turn the adjustment knob counter-clockwise approximately two turns.

5. Make sure that the air regulator is set correctly. The pressure should be set for no lower than 40 psi (3 bar) and no higher than 120 psi (8 bar). To set the proper air pressure, pull up on the air regulator adjustment knob and turn clockwise for more air pressure and counterclockwise for less air pressure. Once the air pressure is set, push down on the adjustment knob until it “clicks”.

6. Check the remote control valve for smooth and proper operation. Do not use the remote control valve if it has not been cleaned and inspected before the start of the working shift.

7. Protect the control gun in freezing conditions. Stop

PROPER WATERBLAST TECHNIQUE

- Maintain a firm solid footing to counter the gun's blasting force. This rearward force is approximately 40 - 50 lbf (88 - 110 kgf).
- Use fall protection when blasting on scaffolding or sloping surfaces. DO NOT operate the gun while standing on slippery surfaces.
- Always start blasting with the system at low pressure and slowly increase the blasting pressure while checking the system for leaks or malfunctions. Depress and release the gun triggers several times at operating pressure to check operation of the remote control valve before commencing blasting operations.
- Make sure that no water is flowing out of the dump port of the remote control valve while blasting.
- Always hold the gun triggers completely closed while blasting. Throttling air through the gun trigger cartridge or allowing leakage out of the diffuser outlet while blasting will quickly damage the cartridge and require its replacement. The air pressure while blasting must be greater than 40 psi and less than 120 psi.

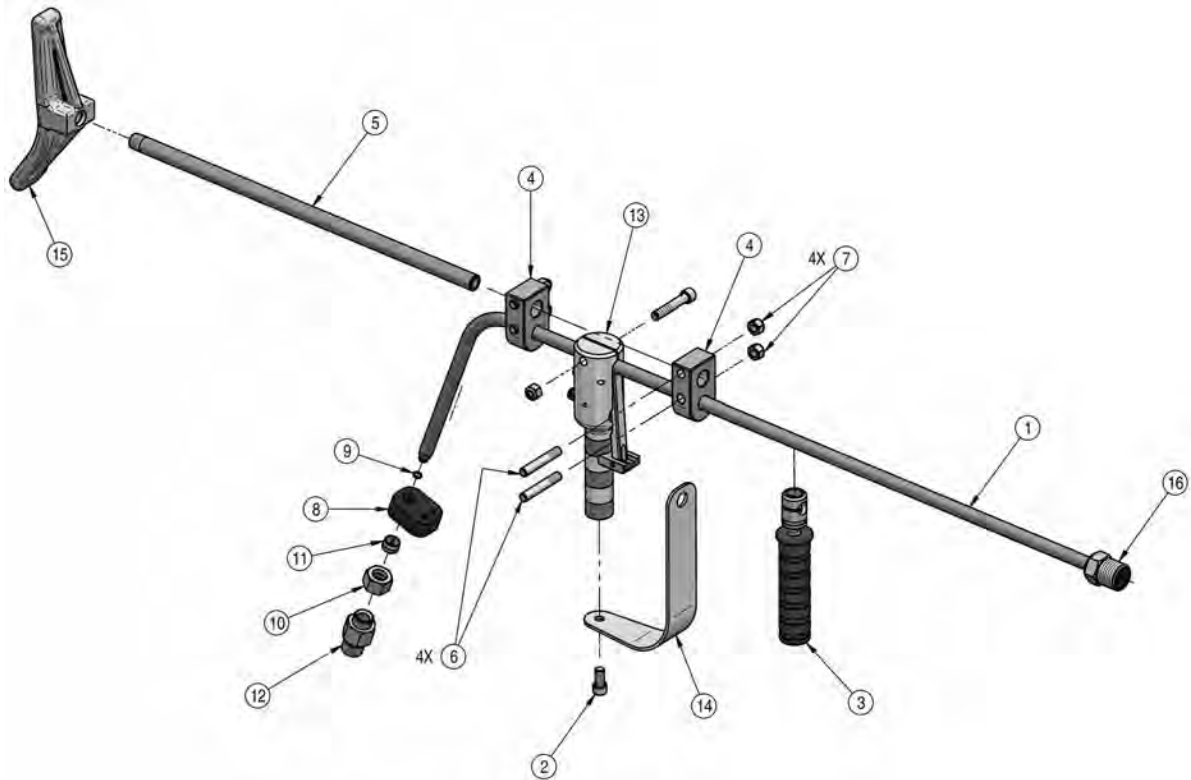
GUN MAINTENANCE

The Jetstream Quadrablast™ Air Gun has no regularly scheduled maintenance. Follow the guidelines outlined in “BEFORE USING THE AIR GUN” on page 14 prior to using the gun. Order replacement components as necessary. Refer to “SERVICABLE PARTS” on page 20 for component part numbers.

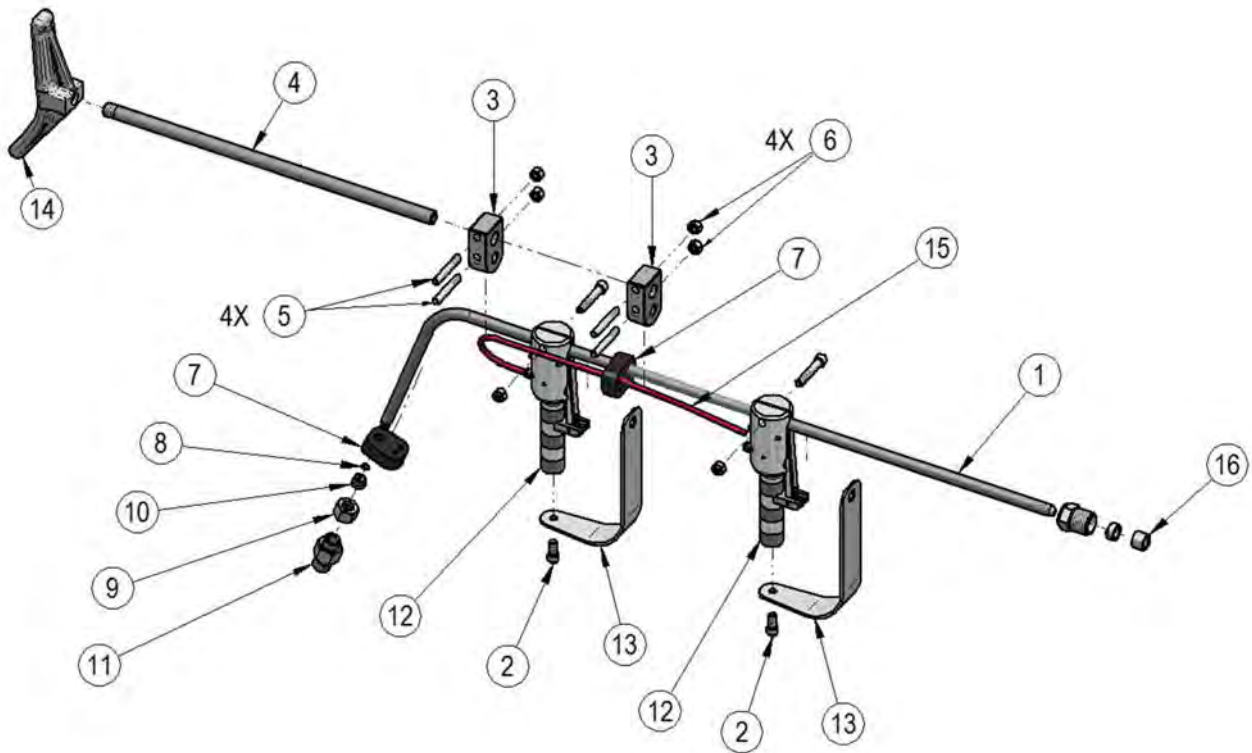


Before working on gun or nozzle, disconnect gun from water source and air source to ensure safety and prevent accidental discharge of high pressure.

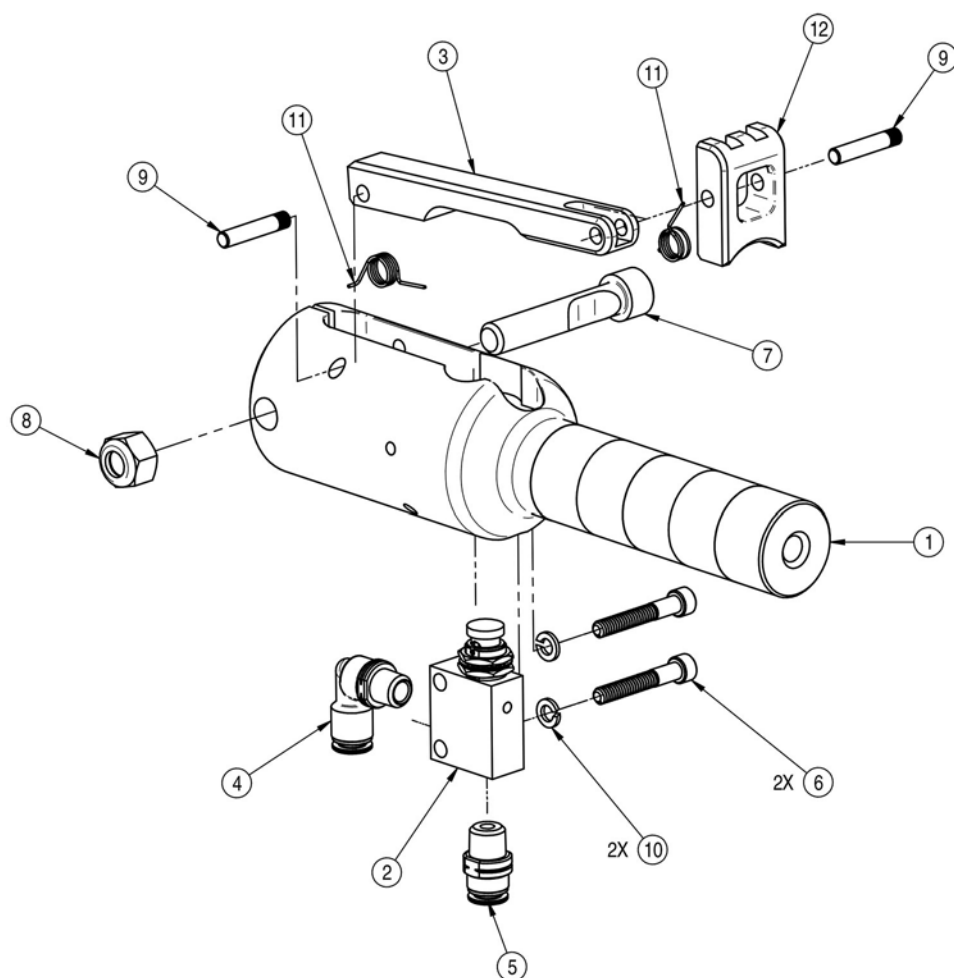
SERVICABLE PARTS



QUADRABLAST™ SINGLE TRIGGER AIR GUN PARTS LIST (61799)			
Item	Part Number	Description	Quantity
1	61674	Barrel, Single Trigger	1
2	27714	Capscrew	1
3	53464	Grip Assembly, Adjustable	1
4	61672	Clamp, Adjustable Stock	2
5	61675	Extension, Stock	1
6	53303	Stud, Cam Shoulder	4
7	25296	Nut	4
8	61673	Guide, Rubber Air Hose	1
9	27502	O-ring	1
10	52083	Nut, Collet	1
11	52087	Collet	1
12	53468	Adapter, Rear Barrel	1
13	61801	Handle Assembly (See 61801 Parts List)	1
14	61671	Guard, Primary Trigger	1
15	50124	Stock, Shoulder	1
16	28090	Gland	1
Not Shown	29903	Case, Quadrablast™ Air Gun.	1



QUADRABLAST™ DOUBLE TRIGGER AIR GUN PARTS LIST (61800)			
Item	Part Number	Description	Quantity
1	61674	Barrel, Single Trigger	1
2	27714	Capscrew	2
3	61672	Clamp, Adjustable Stock	2
4	61675	Extension, Stock	1
5	53303	Stud, Cam Shoulder	4
6	25296	Nut	4
7	61673	Guide, Rubber Air Hose	2
8	27502	O-ring	1
9	52083	Nut, Collet	1
10	52087	Collet	1
11	53468	Adapter, Rear Barrel	1
12	61801	Handle Assembly (See 61801 Parts List)	1
13	61671	Guard, Primary Trigger	1
14	50124	Stock, Shoulder	1
15	27740	Tubing, Plastic	18 in. (46 cm)
16	28090	Gland	1
Not Shown	29903	Case, Quadrablast™ Air Gun.	1



HANDLE ASSEMBLY PARTS LIST (61801)			
Item	Part Number	Description	Quantity
1	61669	Handle, Air Signal Control	1
2	61676	Valve, 2-Way Air	1
3	61670	Trigger, Primary	1
4	61678	Air Fitting, Elbow	1
5	61677	Air Fitting, Straight	1
6	61805	Capscrew	2
7	53762	Stud, Handle Clamp	1
8	25296	Nut	1
9	53787	Pin, Groove	2
10	25980	Washer	2
11	25594	Spring, Safety Latch	2
12	61883	Safety, Trigger	1



Streator, IL
(815) 672-6028

Toledo, OH
(888) 415-7368

New Brunswick, NJ
(732) 448-7830

Highland, IN
(219) 924-3180

Lexington, SC
(803) 996-0741

Leeds, AL
(800) 822-8785

Williston, ND
(701) 572-7421

La Porte, TX
(281) 674-8668

Gonzales, LA
(225) 647-0660

Midland, TX
(432) 563-4450

Salt Lake City, UT
(801) 808-4590

Long Beach, CA
(866) 515-9891

Lakewood, WA
(253) 584-0653

Jetstream has the most comprehensive products, service, rental, and training in the industry. Whether you are looking to purchase or rent water blasting equipment, or if you need service and support for your existing equipment, we've got you covered with the most experienced and customer-focused team in the industry.

In the United States, our products are serviced by FS Solutions. With 13 convenient locations, FS Solutions provides high-performance parts and accessories, Jetstream rentals, repair and rebuild, and safety training services. In Canada, Joe Johnson Equipment (JJE) is there to handle your every need.

Jetstream is a subsidiary of Federal Signal Corporation and has the financial strength, backing, and network of distributors around the world to support any customer.

INTERNATIONAL DISTRIBUTORS

Santiago, Chile
Orbitec

Glasgow, Scotland
Powerjet Rentals

Dubai, UAE
Asia Waterjet

Johannesburg, South Africa
Total Blasting

Adelaide, Australia
Metco

Shanghai, China
FS Asia

Singapore
Asia Waterjet

JETSTREAM OF HOUSTON

5905 THOMAS ROAD
HOUSTON, TEXAS 77041

(832) 590-1300

(800) 231-8192

